



Science and technology  
Achieve the beauty of refinement

**M A M O | Architectural Stone Surfaces®**

27 Helles Ave, Moorebank NSW 2170  
(02) 8985 2666  
hello@mamoliving.com.au  
mamoliving.com.au

**M A M O | Architectural Stone Surfaces®**



**CARE**  
MANUAL SINTERED STONE



# We Protect **Your Health**



## Safe Antibacterial

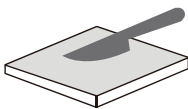
Suitable for all types of environments, especially in areas where bacteria are prone to reproduction. After adding antibacterial materials, cooking or grilling can be carried out between the surfaces of the stone slabs. MAMO Antibacterial Sintered Stone has better moisture and mold resistance than traditional plates, helping to eliminate the growth of bacteria such as Staphylococcus aureus and Escherichia coli.

# Technical **Features**



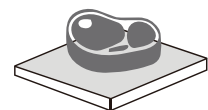
## Easy to clean and maintain

Any dirt can be easily removed. Resistant to various chemical cleaning agents, such as bleach.



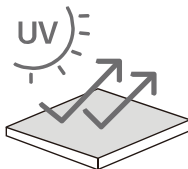
## Ultra strong wear resistance and scratch resistance

The high hardness makes it difficult to scratch and grind.



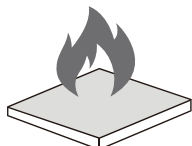
## Suitable for contact with food

It does not contain any harmful substances and is suitable for contact with food. Food can be directly placed on the surface of the Sintered Stone for processing.



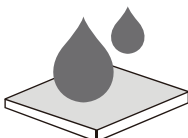
## High UV resistance

100% natural, the color will not fade even when exposed to sunlight or other extreme weather conditions.



## High temperature resistance

Not flammable, resistant to high temperatures, and will not release any harmful substances at high temperatures.



## Low water absorption (less than 0.1%)

High strength, good compactness, and almost zero absorption level

# SINTERED STONE



M A M O  
- STONE ART -

# SINTERED STONE

## Use and Maintenance Standards

The board is very easy to clean and does not require special maintenance work. The production process (involving very high-quality raw materials and high firing temperature) makes the surface of MAMO Sintered Stone non absorbent and almost completely pore free, which means that the cleaning operation is simple and efficient.

In fact, ceramic structures do not allow dirt to penetrate into the interior of the plate.

### 1. Cleaning after installation

After processing and bonding the materials, clean the ceramic surface to remove any possible contaminants (copper green, filler or adhesive residue, etc.). It is crucial to perform this step correctly, as improper operation may cause halos.

To clean the surface of the structure, we recommend using a large amount of water and liquid vacuum cleaners to quickly remove stains and remove any dirt that may deposit on the surface structure. It is important to complete the cleaning phase before the adhesive completely hardens, as given the surface structure, it will be more difficult to remove the adhesive after it has completely hardened.

For proper cleaning, please always follow the specific instructions provided by the manufacturer of cement and epoxy resin fillers and adhesives used for installing floor slabs to understand the products to be used, as well as the methods and waiting times. If installing floor slabs outdoors, we recommend cleaning them immediately after installation at the coolest time of the day. Do not use abrasive substances or equipment. Under no circumstances should hydrofluoric acid or products containing it be used.

The instructions listed in this paragraph do not apply to the Filo series and all Lucidato finishes. Any residue of materials used during installation that cannot be removed after drying cannot be considered a material defect. During installation and cleaning, regularly clean glossy finished products to avoid surface scratches.

It is necessary to use a slightly worn scratch resistant sponge and a large amount of water to eliminate residues of filler or epoxy resin adhesive after laying the board and before drying the product. It is crucial to use water-based products that are always clean and frequently replaced. Cleaning agents can be used for deep cleaning the filler manufacturer suggests that attention be paid to eliminating all halos. To improve efficiency, we recommend wiping the floor dry with absorbent paper to collect all resin residues and prevent them from depositing on the surface and producing opaque halos after water evaporation.



## 2. Regular cleaning

Before use, it is recommended to clean the entire surface with acidic products to remove halos and residue from the construction site. Thoroughly rinse with water to avoid copper rust on the surface. For polished slabs, it is necessary to remove protective wax based components used for packaging between the slabs. These elements can be removed with a wooden shovel or industrial alcohol.

For the daily cleaning of MAMO Sintered Stone a soft cloth, warm water, and commercially available ceramic surface cleaning agents can be used. These must be diluted/rinsed according to the instructions of the detergent to avoid surface copper rust that may retain dirt.

Light or dark background finishes may require more frequent daily maintenance, especially if they are structured, heavily trafficked, or have direct external channels, as they often make dirt more noticeable. According to the type of structure, it is necessary to use a cloth and apply sufficient pressure to maintain surface cleanliness.

Please note that early cleaning can make it easier to remove stains. If left on the surface for a long time, some residues may require the use of specific cleaning products. Under no circumstances should hydrofluoric acid or products containing it be used.

